

# When Do Männerparteien Elect Women? Radical Right Populist Parties and Strategic Descriptive Representation

ANA CATALANO WEEKS *University of Bath, United Kingdom*

BONNIE M. MEGUID *University of Rochester, United States*

MIKI CAUL KITTILSON *Arizona State University, United States*

HILDE COFFÉ *University of Bath, United Kingdom*

**R**adical right populist (RRP) parties are often described as Männerparteien, predominantly led by, represented by, and supported by men. Yet recently, these parties have elected more women. Under what conditions do we see this increase in women MPs? This paper presents a novel argument of strategic descriptive representation: electorally struggling RRP parties with large gender gaps in voter support increase their proportion of women MPs to attract previously untapped women voters. To test this argument, we develop the most comprehensive dataset to date on women MPs and gender differences in voter support across Europe and over time, covering 187 parties in 30 countries from 1985 to 2018. Our analyses confirm that RRP parties engage in strategic descriptive representation when they are both struggling electorally and suffering from a gender gap in support. Additional models reveal that this tactic is largely unique to RRP parties.

## INTRODUCTION


**R**adical right populist (RRP) parties are often described as Männerparteien. They are predominantly led by and represented by men (Mudde 2007). Gender gaps are also evident among the RRP parties' electorate, with women making up a smaller share of party supporters compared with men (e.g., Coffé 2018; 2019; Givens 2004; Immerzeel, Coffé, and van der Lippe 2015; Spierings and Zaslove 2015). Although male-dominated, RRP parties are increasingly including women as MPs and leaders. For example, the Swiss People's Party (SVP) sent 11 women (17% of their parliamentary party) to the National Council in 2015, nearly doubling the number of women elected in 2011. High-profile women also lead (or have recently led) RRP parties, including Marine Le Pen in France, Siv Jensen and Sylvi Listhaug in Norway, and Alice Weidel in Germany.


Given that RRP parties have traditionally held very conservative views on the role of women in society, what accounts for this increase in women's representation? In this paper, we examine the conditions under


which RRP parties elect more women MPs. We argue that a driving force behind increasing numbers of women among the party's parliamentary delegation stems from the RRP parties' substantial gender imbalance among voters. We advance a new theory of *strategic descriptive representation* that brings together insights from the fields of gender, voting behavior, and party politics: parties use an increase in women's descriptive representation (the number of women in office) as a tool to appeal to a broader set of voters, in addition to or as a substitute for standard programmatic tools of party competition. In the case of RRP parties, we argue that electorally struggling parties with a deficit in women's support seek to elect more women MPs as a way to improve their support among women voters. Increasing the number of female faces becomes a tactic—one that is perhaps less costly than programmatic change—to court an undertapped constituency.


To test this argument, we develop the most comprehensive dataset to date on women as MPs, women as party leaders, and gender differences in voter support across Europe and over time. Our pan-European dataset includes 187 parties in 30 countries from 1985 to 2018. We find that, among RRP parties, the interaction of a male-dominated electorate and electoral threat predicts higher proportions of women MPs. Analyses including all parties across the party system reveal that this interaction is largely unique to RRP parties.

The results of this paper expand our understanding of the RRP party family. Challenging the existing narrative of these parties as male-focused, our findings show that women are seen as a possible resource to an RRP party. But unlike the claim that RRP parties use women's representation as a “standardization” tactic to better comply with broader norms of gender diversity (Erzeel and Rashkova 2017; Mayer 2013)—a

Ana Catalano Weeks , Lecturer (Assistant Professor), Department of Politics, Languages and International Studies, University of Bath, United Kingdom, [a.c.weeks@bath.ac.uk](mailto:a.c.weeks@bath.ac.uk).

Bonnie M. Meguid , Associate Professor, Department of Political Science, University of Rochester, United States, [bonnie.meguid@rochester.edu](mailto:bonnie.meguid@rochester.edu).

Miki Caul Kittilson , Professor, School of Politics and Global Studies, Arizona State University, United States, [miki.kittilson@asu.edu](mailto:miki.kittilson@asu.edu).

Hilde Coffé , Professor, Department of Politics, Languages and International Studies, University of Bath, United Kingdom, [h.r.coffe@bath.ac.uk](mailto:h.r.coffe@bath.ac.uk).

Received: January 06, 2021; revised: June 27, 2021; accepted: January 25, 2022.

prediction which is more consistent with electorally successful parties<sup>1</sup>—we argue and find that RRP parties are most likely to use the strategy when they are both losing votes and lacking women voters. In making this claim, this paper reconciles the current discussion of RRP parties as *Männerparteien* with the evidence that women voters can be an important, albeit overlooked, constituency for them, as was the case with the German Nazi Party (NSDAP; Boak 1989). Given that RRP parties have become central political actors across Europe and have been included in national governments, their embrace or rejection of women representatives has important ramifications for gender representation at the elite and mass levels.

This paper also advances our knowledge about party competition in general. While the literature is dominated by a discussion of programmatic tactics for vote or seat maximization, our work emphasizes the importance of descriptive representation as a political and electoral tool. Such strategy allows the party to attract new voters without necessarily altering core issue positions and therefore, alienating existing voters. Building on the insights of previous work on women's representation in parties (e.g., Erzeel and Rashkova 2017; Kitilson 2006; Valdini 2012), our paper is the first to identify gender gaps in party support and overall electoral success as key variables in explaining women's representation. We examine how RRP parties employ the tactic of strategic descriptive representation as a means of gaining women voters, but the paper and its theory have implications for all types of parties facing electoral declines and searching for untapped pockets of future voters.

We start by reviewing the existing literature on why women MPs are elected. We then propose the theory of strategic descriptive representation and spell out its implications for RRP parties' increase in women representatives. Third, we describe our new comprehensive time-series, cross-sectional dataset on women MPs, party leaders, and voter-base gender gaps. Next, we discuss the results of our analyses for women's representation across RRP parties, along with robustness checks. Fifth, we introduce two case studies to assess the plausibility of our strategic argument and illustrate its effect on candidate selection decisions. Sixth, we explore to what extent our argument of strategic descriptive representation translates to other party families in Europe. We conclude by discussing the implications of our findings and future extensions of the work.

## WHY DO PARTIES ELECT WOMEN? IDEOLOGY, ORGANIZATION, AND WOMEN ACTIVISTS

Women have made substantial gains in descriptive representation over the last few decades. But they are

<sup>1</sup> Although this work does not specify the conditions under which RRP are motivated by standardization concerns, this prediction follows from their argument.

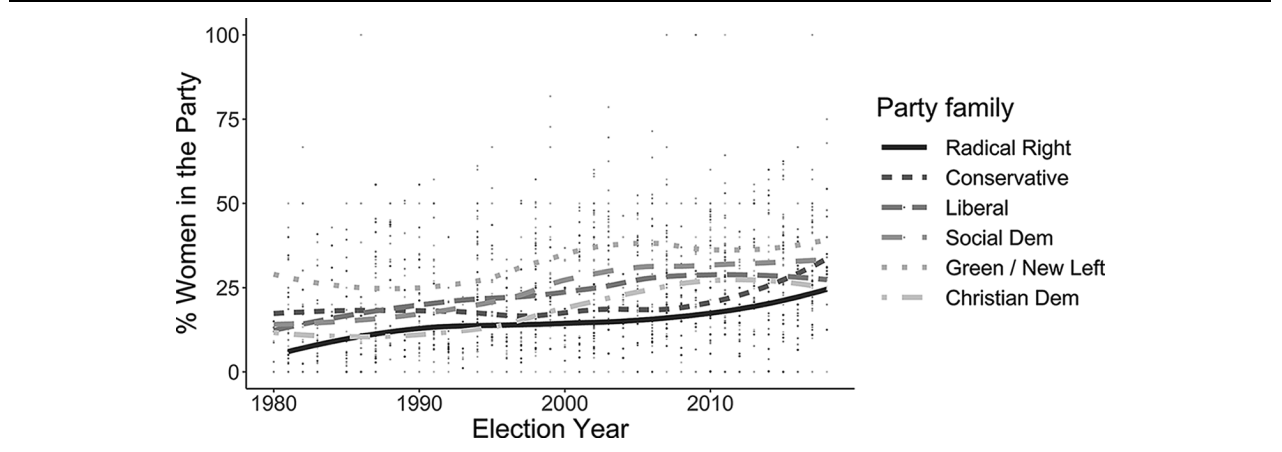
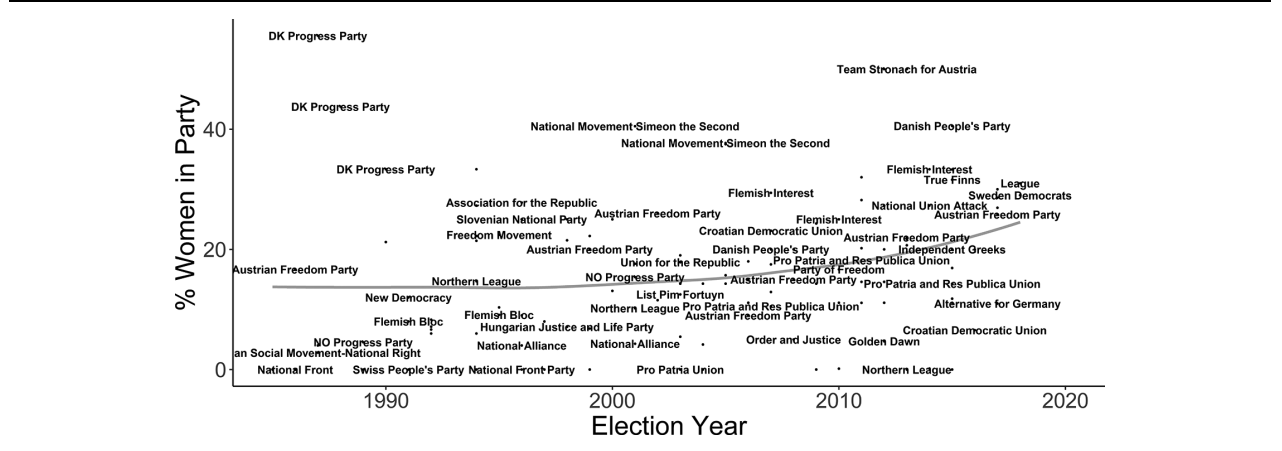
still underrepresented in most countries, and significant cross-national differences in women's representation exist. Country-level institutional factors, such as proportional representation electoral rules with high district magnitude (Luhiste 2015; Norris 2000; O'Brien and Rickne 2016; Paxton 1997; Valdini 2012), and gender quotas (Dahlerup and Freidenvall 2005; Krook 2009; Murray 2004; Paxton and Hughes 2015; Tripp and Kang 2008) facilitate higher shares of women in parliaments. Yet significant variation in women's descriptive representation exists *within* countries, across parties, which cannot be explained by these factors.

Figure 1 demonstrates this puzzle of variation in women's representation across party families in Europe from 1980 to 2018. Green/New Left parties maintain the highest share of women over this span of time. Despite an ebb and flow, both Social Democratic and Conservative parties make gains over time and end up following on the heels of the Green/New Left party family. In contrast, the RRP party family has among the lowest percentage of women MPs of all party families during this period. Yet, since the mid-2000s, women have made strides in the RRP party family. By the end of the 2010s, RRP parties have the same proportion of women MPs as Christian Democratic parties. As we discuss later, there is also variation within the RRP party family, with some parties becoming more gender inclusive over time than others.

To explain the proportion of women among a party's MPs, party-level analyses have suggested three sets of factors: party ideology, party organizational structures, and women's activism within the party. First, party decisions on gender equality within party ranks may reflect the party's larger ideology about the role of women in society. Early research on party-level variation in descriptive representation often found leftist parties to be more likely to adopt voluntary gender quotas and to have more women among their slate of MPs than centrist or rightist parties (Caul 1999; Kitilson 2006; Kunovich and Paxton 2005; Lovenduski and Norris 1993). The emergence of "new left" (Green and radical left) parties radically altered women's representation on the left, with research finding that these parties in particular promote gender equality as a core part of their ideology (Keith and Verge 2018).

However, in recent years, the relationship between leftist parties and gender inclusion appears more tenuous. Conservative parties have often highlighted "women's interests" although not necessarily from a feminist perspective (Celis and Childs 2012). O'Brien (2018) finds that references to gender are equally salient for Christian Democratic and Social Democratic parties, albeit in different ways. And parties such as the British Conservative and German Christian Democratic parties have promoted women MPs under certain conditions (Childs 2008; Childs and Webb 2012; Wiliarty 2010). Figure 1 shows that Conservative parties in Europe now boast the third-highest share of women in the party on average, ahead of the more centrist Liberal and Christian Democratic party families.

Second, studies have indicated a relationship between party organizational structures and women's

**FIGURE 1. Proportion of Women MPs in Different Party Families, Europe 1980–2018, Loess smoothing****FIGURE 2. Proportion of Women MPs in Radical Right Populist Parties, Europe 1980–2018, Loess Smoothing**

descriptive representation, but the results are mixed. Some comparative research suggests party centralization enables women's gains among MPs (Aldrich 2020; Kittilson 2006). However, there is also evidence of the opposite relationship. Kenney (2013), for example, finds decentralized structures to be more conducive to women's election. Similarly, Fortin-Rittenberger and Rittenberger (2015) find that more inclusive selectorates, not centralized processes, lead to more women MEP candidates in European parliamentary elections.

Third, women's activism within the party is an important force for change. In particular, women among the party leadership and women's party organizations play a positive role in pressing for more women candidates (Caul 1999; Childs and Kittilson 2016; Kunovich and Paxton 2005; although see Tremblay and Pelletier 2001).

Although the existing literature has been successful in accounting for general trends in women's representation and differences between parties, important puzzles remain. One such puzzle is the underrepresentation of women in the RRP party

family. As starkly demonstrated by Figure 1, the RRP party family stands out for its lowest level of women MP representation for much of the 1980–2018 period. Though this could be dismissed as consistent with their ideology and reputation as *Männerparteien*, the party family has seen a significant increase in their share of women MPs in the 2000s, across plurality and proportional systems alike, and despite maintaining their extremist authoritarian ideology.

A second puzzle is highlighted by Figure 2: there is significant variation *within* the RRP party family, with some parties—Italy's Northern League, France's National Front/National Rally, and the Danish People's Party, for example—increasing their share of women in the party substantially over time, whereas others do not. This variation also cannot be accounted for by the country- or party-level explanations dominant in the literature. For example, while national gender quotas have become more popular across Europe over time, the systematic opposition of RRP parties to quotas reduces their explanatory force for

differences between parties.<sup>2</sup> Although there is some variety in the ideology of RRP parties, they all share the broad ideological elements of nativism (anti-immigrant and nationalism), authoritarianism, and populism (Mudde 2007) considered anathema to gender equality. Finally, although there has been an increase in the number of women party leaders among the RRP party group, their singular role in explaining an increase in women MPs does not seem straightforward, as RRP parties with women leaders both have a comparatively high proportion of women MPs (e.g., the National Rally in France) and low proportion of women MPs (e.g., Alternative for Germany [AfD] in Germany).<sup>3</sup>

## A THEORY OF STRATEGIC DESCRIPTIVE REPRESENTATION

We argue that a fourth party-level factor—the gender composition of vote share—is critical to understanding the trends in women’s political party representation over time and across and within party families. Building on previous research suggesting a role of vote and seat losses for party feminization (Campbell 2016; Childs and Webb 2012; Eagle and Lovenduski 1998; O’Brien 2015) and drawing on the insights of previous work on strategic women’s representation (e.g., Erzeel and Rashkova 2017; Kittilson 2006; Valdini 2012), we develop and empirically test a new theory of the conditions under which parties engage in strategic descriptive representation.

Putting the factors of electoral loss and the often-overlooked gender differences in voter support at its core, we posit that parties embrace women as MPs when they need to increase their vote share and women are currently underrepresented among their voters. An increase in women’s descriptive representation is thus seen as a tactic for broadening a party’s electorate in order to attract previously untapped women voters and remedy the party’s vote stagnation or decline. As theorized by Pitkin (1967), descriptive representation taps one dimension of political representation, calibrating the degree to which a representative body mirrors the composition of the society it serves. Our theory of *strategic descriptive representation* is less focused on gauging the quality of representation and more aligned with the ways women’s presence can be deployed as a tool in a party’s kit to bolster their electoral trajectory.

Our strategic argument begins with the recognition that political parties are rational actors, seeking to maximize their electoral support. It follows that parties and their elite will engage in tactics to improve upon or solidify their electoral success. Although the party

competition literature tends to focus on programmatic movement for maximizing voter support (e.g., Adams et al. 2004; Adams and Somer-Topcu 2009; Downs 1957; Laver and Hunt 1992), descriptive representation can also be an effective method for attracting and mobilizing voters. There is evidence of this relationship with respect to race and ethnicity (e.g., Bobo and Gilliam 1990; Dancygier 2017; Tate 2003), and also gender. Women are more likely to support women candidates and to support parties with higher percentages of women representatives (Banducci and Karp 2000; Box-Steffensmeier et al. 2003; Goodyear-Grant 2010; Penney, Tolley, and Goodyear-Grant 2016; Plutzer and Zipp 1996). A recent meta-analysis of candidate choice survey experiments shows that women tend to prefer women candidates more than men do, although both respond to women candidates positively (Schwarz and Coppock 2021). Multiple mechanisms behind this relationship have been identified: some voters might be motivated primarily by the visible similarities between them and party representatives, others might be motivated by the belief that women representatives will bring desirable policy changes to parliament and party organizations, including a greater focus on shared women’s issues and interests (Greene and O’Brien 2016; Kittilson 2008, 2011; Tremblay 1998; Xydias 2007). For the sake of our argument, it suffices to recognize that gender affinity is a feasible part of the explanation for voters’ preferences. Even if gender affinity effects are not large, the logic of the argument stands so long as party elites believe that women are more likely to vote for women.

Beyond recognizing this voting pattern of women supporting women, there is evidence that parties employ strategic descriptive representation. For example, in times of heightened electoral uncertainty, parties are also more likely to adopt gender quota laws to increase their support among women voters (Murray, Krook, and Opello 2012; Weeks 2018). Party competition for women’s votes also motivated tactical decisions by political elites in the United States in the era of the suffrage movement (Teele 2018). Valdini (2019), specifically, discusses how established (largely men) party gatekeepers strategically calculate that having more women representatives can benefit parties’ less-than-positive images and gain them support from women voters in upcoming elections.

Evidence from case studies reveals some of the dynamics behind decisions to promote more women for office. One strategy is for women in party leadership to use polling data about deficits in support from women to push to elect more women MPs. This tactic was particularly effective in the British Labour Party in the 1990s and has found some effectiveness in elections since then for both the Labour and Conservative Parties (Childs and Webb 2012; Eagle and Lovenduski 1998). Campbell (2016, 594) sums up this dynamic stating, “critical actors are important but they are most successful when they are able to claim that they can bring women voters with them.”

Although parties have multiple methods for increasing their electoral support, altering the gender

<sup>2</sup> No RRP party has voluntarily adopted party-level gender quotas in Europe (Weeks *Forthcoming*).

<sup>3</sup> It has also been argued that the ability of women RRP party leaders to advance gender equality is mitigated by the fact that many parliamentary candidates are partners, daughters, and sisters of the parties’ previous male leaders; their role as path-breaking leaders capable of fundamentally altering the status quo may be in question (Mudde 2007; Folke, Rickne, and Smith 2021).

composition of their parliamentary delegations is a relatively low-cost—if not necessarily costless—tactic. Adding more women as MPs is a highly visible and symbolic step, and the information is easily accessible even to uninformed voters. In addition, we suggest that it could be less risky than other constituency-expanding appeals, such as moderating stances on core issues or diversifying their issue offerings. Research suggests that voters in advanced democracies do not discriminate against women candidates—even radical right populist voters. For example, in a recent survey experiment, Saha and Weeks (2020) show that United Kingdom Independence Party (UKIP) voters are no less likely to support ambitious women than men candidates. Previous research also finds that if right-wing party leadership perceives the issue of diversity in representation as important for electoral support, they may be willing to risk losing some local activist support (Sobolewska 2013). Increasing the number of women MPs is a tactic that can be pursued, at least initially, without requiring any coterminous programmatic shifts—dilution of the party message—that may drive away existing voters. To paraphrase Donno and Kreft (2019, 726), expanding women’s representation in the party “represents a ‘quieter’ strategy of preemptive cooptation.”

In sum then, we expect parties’ electoral fortunes and gender gap to drive their decision to increase the number of women MPs. Figure 3 presents a visual summary of the main argument, using a table of scenarios and predictions for each situation. The left column considers incentives when the party attracts a low male/female (M/F) voter ratio (the voters are not men-dominated). It shows that parties have little reason to change their level of women’s descriptive representation when they already do well among women voters (whether they face an electoral threat or not). Indeed, those women-dominated parties losing votes might actually have an incentive to increase their percentage of men MPs to attract underrepresented men voters. The right column considers those parties with men-dominated electorates (high M/F voter ratio), and here, opposite hypotheses emerge depending on the party’s

electoral vulnerability. In the bottom-right cell, when a men-dominated party faces an electoral threat, the party ought to seek new electorates—specifically, the untapped women’s vote. Strategic inclusion (Hypothesis 1a) is the logical tactic. In the top-right cell, when a men-dominated party is doing well, we predict it will double down on the exclusion of women in the party (“strategic exclusion,” Hypothesis 1b). In this scenario, success may be derived (or perceived to derive) from a party’s men MPs. Women are not needed to gain votes.

## WOMEN AND MÄNNERPARTEIEN

Although the presented strategy of increasing women’s descriptive representation might be broadly accessible to a variety of individual parties, RRP parties stand out as being particularly well positioned to take advantage of such a strategy. First, there is consistent evidence of the persistence of a gender gap among radical right populist voters. Women are significantly less likely to support RRP parties than men (Coffé 2018; 2019; Gidengil et al. 2005; Givens 2004; Hartevelde et al. 2015; Immerzeel, Coffé, and van der Lippe 2015; Mudde 2007; Spierings and Zaslove 2015). Indeed, RRP parties stand out as having the largest overrepresentation of men voters among all party families.

Second, accompanying this voter-base gender gap has been a gender imbalance among party MPs and leaders. RRP parties have typically been led by men, with women traditionally underrepresented as party leaders. The imbalance extends to parliamentary representatives where, as Figure 1 revealed, RRP parties have consistently elected among the lowest percentage of women MPs of any party family in Europe. Although there have recently been some significant developments in women’s roles in these parties, as the current leadership of Sylvi Listhaug of the Norwegian Progress Party, Marine Le Pen of the French National Rally and Alice Weidel of the German AfD show, these women are noticeable because they are exceptions to the male-dominated leadership pattern. An implication of this

**FIGURE 3. Party Incentives for Strategic Descriptive Representation**

		Male/Female Voter Ratio	
		Low	High
Electoral Threat	Low	<i>Status quo: Party does well among men and women, and at the polls. No need to include more women in party.</i>	<b>Strategic Exclusion (H1b):</b> <i>Party with a men-dominated electorate that gains votes doubles down on exclusion of women in the party.</i>
	High	<i>Status quo: Party already attracts women voters, so will not target women voters as a strategy to improve vote share.</i>	<b>Strategic Inclusion (H1a):</b> <i>Party with a men-dominated electorate that loses votes elects women to appeal to untapped women voters.</i>

condition is that strategic descriptive representation would not be an effective tool for those parties that already elect significant shares of women, such as Green parties and many Social Democratic parties. Indeed, Social Democratic parties may have already used this strategy effectively in previous decades. It is likely that there is some threshold of women's descriptive representation, beyond which parties are less likely to envision additional strategic gains from adding women.<sup>4</sup>

Third, most RRP parties' organizations tend to be highly centralized. Strategic descriptive representation is only likely to be effective in party organizations where elites can successfully control candidate nomination and placement on lists. This rules out parties with highly decentralized candidate selection procedures and parties that have democratized their procedures in recent years by implementing primaries (Hazan and Rahat 2010). Although we lack comprehensive cross-national, time-series data on candidate selection procedures across parties and countries, decentralized candidate selection is widespread across other party families. For example, in Belgium the majority of parties use decentralized candidate procedures with the exception of the Flemish Interest and the French-speaking Greens (Weeks 2018).

The described conditions suggest (a) that RRP party leaders have the ability to increase shares of women candidates in winnable positions, (b) that their parties could benefit electorally from attracting more women voters, and (c) that the expansion of women MPs might prove a useful means to achieve this goal. This latter point is further reinforced by the finding that women voters might be more reluctant than men to vote for extremist parties based on perceived negative social cues (Harteveld et al. 2015). The presence of women representatives in RRP parties may help to reduce such concerns about RRP parties' outsider status.

Indeed, other strategic options to appeal to women voters on the basis of gender would not prove as effective for RRP parties. Research by Harteveld and Ivarsflaten (2018) reveals few gender differences in policy preference over immigration, meaning that the RRP reinforcing their current anti-immigration position is unlikely to yield additional women voters (see also Mayer 2013). Finally, despite the possible claim that an outreach to women voters might not be perceived to be credible by a RRP party given the conservative ideas about gender equality of many RRP parties (De Lange and Mügge 2015; Mayer 2015; Mudde 2015), various RRP parties have modernized their views on gender equality issues. In particular, efforts have been made by some voices on the radical right to link existing anti-Islam platforms to liberal feminist stances—a trend referred to as

*femonationalism* (Farris 2017). Specifically, some northern European RRP parties have cloaked their campaign against Islamic practices toward women (e.g., forced marriage, honor killings, headscarves) as a call for greater gender equality and tolerance of LGBTI rights (Akkerman 2015; De Lange and Mügge 2015; Mayer 2013; Mudde and Kaltwasser 2015). This may appeal to more feminist-minded women (and men) voters, although Celis and Childs (2020) point out that RRP parties are using “gender equality as a weapon against an alleged “Islamization” of Europe” (97).

In summary, given the gender gap in votes and representation, women are an obvious electoral target for RRP parties to broaden their electorate. We expect male-dominated RRP parties that are losing votes or have hit an electoral plateau to have strong incentives to elect more women MPs (H1a). By contrast, electorally successful male-dominated RRP parties have little incentive to alter their vote-getting men-focused approach and should elect fewer women (H1b).

## DATA AND METHODS

To test our hypotheses, we created the most comprehensive dataset to date on women as MPs, women as party leaders, and gender differences in voter support across Europe and over time (Weeks et al. 2022).<sup>5</sup> The data used in our models include 187 parties in 30 Western and Eastern European countries from 1985 to 2018.<sup>6</sup> Of these, 22 RRP parties are included from 19 countries.<sup>7</sup>

### Dependent Variable

Our dependent variable is the proportion of women MPs at the party level following a given election. The coding of this variable is based on verified information from parliamentary websites and electoral commissions, supplemented with data from the *European Journal of Political Research* “Political Data Yearbook” and secondary sources, when necessary.<sup>8</sup> Ideally we would also analyze time-series cross-national candidate data, but this is not available. Examining the percentage of women in the parliamentary party allows us to capture party efforts to get women elected by placing them in winnable seats. Because evidence suggests that parties not committed to equal gender representation often place women candidates in

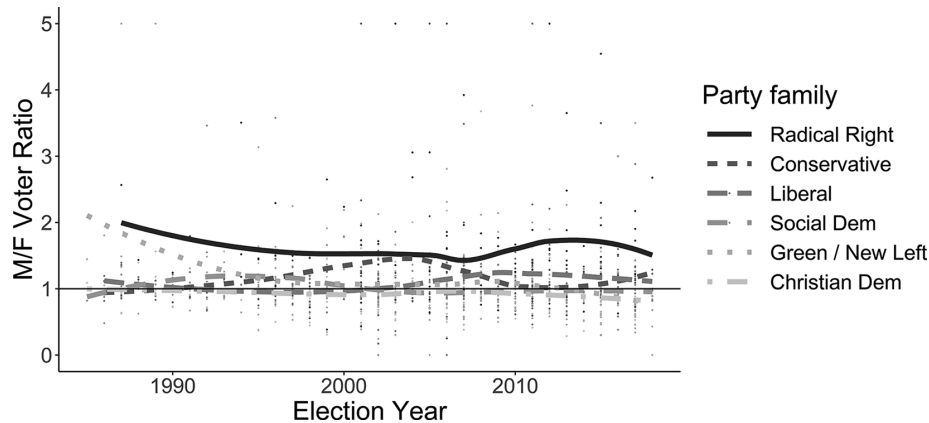
<sup>4</sup> This scope condition is consistent with Gilardi's (2015a) findings that the positive role-model effect of women parliamentarians on the number of new women candidates is only strong in the early years of women's representation, when gender diversity is not taken for granted.

<sup>5</sup> The data and replication files can be found at: <https://doi.org/10.7910/DVN/SG55BJ>.

<sup>6</sup> The parties, countries, and years included in the dataset are determined by the availability of the variables and the survey data on which the gender gap variable is coded.

<sup>7</sup> Given the increasing prominence of RRP parties across the whole of Europe, we join scholars (e.g., Harteveld et al. 2015; Inglehart and Norris 2016; Mudde 2007) in examining these parties in both Western and Eastern Europe. We build on categorizations by Mudde (2007) and Bustikova (2014) to classify RRP parties. Table A1 in the Appendix lists the RRP parties included in our analyses.

<sup>8</sup> The full list of sources is available from the authors.

**FIGURE 4. Male/Female Ratio in Voting Behavior for Different Party Families, Europe 1985–2018, Loess Smoothing**

Note: M/F voter ratio values above 5 (highly male-dominated electorate) are set to 5 for the sake of this plot only to facilitate greater legibility. A plot without this restriction can be found in the Appendix (Figure A1).

uncompetitive districts or uncompetitive spots on party lists (Jones 2004; Tavits 2010), it is likely that we are, if anything, underestimating the full effect of the explanatory factors on women's representation as candidates and thus, biasing our results against finding support for our theory.

### Explanatory Variables

We are interested in the effect of RRP parties' electoral performance and their ratio of men to women voters (the M/F voter ratio) on the descriptive representation of women MPs. Few studies systematically examine gender differences in support for RRP parties, even fewer investigate how these differences have changed over time, and none examines how these gaps might condition party behavior. We measure overall electoral fortunes as a party's change in vote share since the last election lagged.<sup>9</sup>

Gender differences in voter support are measured as the ratio of the percentage of men respondents who report voting for a party to the percentage of women respondents who report voting for the same party. These percentages are derived from the Comparative Study of Electoral Systems (CSES), and where or when not available, we rely on the European Election Study (EES) and the European Social Survey (ESS). We prefer CSES data because the survey asks about respondents' electoral behavior in the then-current national parliamentary election context. Although it is retrospective ("who did you vote for"), it is also the most temporally proximate measure available (and the M/F voter ratio measure we use is then lagged). If data from both EES and ESS are available for the same party, we take the value from the survey conducted closest to the election year. In all surveys, respondents identify the party they voted for (excluding "don't

know," "don't remember," and spoiled ballots) in the last election. For countries with mixed member systems, the results for the party list survey questions are used. For pure proportional representation systems, we use the party list question, while the candidate party question is used for candidate-based elections. We applied poststratification demographic weights for all data.

Figure 4 displays gender differences in voting behavior by party families between 1985 and 2018 across Europe. The figure presents the M/F voter ratio, with 1 indicating an equal proportion of men and women voters, a score higher than 1 revealing a higher proportion of men than women voters, and a score lower than 1 indicating a lower proportion of men than women voters.

Figure 4 reveals the variation in gender gaps in voting across party families and time. The RRP party family stands out with the largest overrepresentation of men among voters of all parties (the RRP party mean is 1.9, or nearly 2 men voters for every woman voter). As a party family, RRP parties have experienced the largest deficit in women's votes. Since 1980, that gap narrowed before increasing again around 2010. In recent years, the gender gap in RRP parties is again falling, but the party family remains the most male-dominated of any party family. Figure A2 in the Appendix presents the gender gaps in voting for the RRP parties included in our analyses over time.

Based on the existing work on women's representation, we also include a number of variables as controls. To capture the electoral climate in which women candidates are being elected, we include a measure of the electoral system (Proportional Representation and Modified Proportional Representation, where Majoritarian/SMD is the reference category), a continuous measure for district magnitude, and dichotomous variable measuring whether a country has national-level gender quota laws or

<sup>9</sup> Vote share data from Volkens et al. 2019.

not.<sup>10</sup> We also include the lagged percentage of women MPs in the country's parliament as an indicator of country-level context for women's representation and to test for the idea that RRP parties' behavior is being driven by the pressure to meet the gender diversity norms of "standard" parties (Erzeel and Rashkova 2017; Mayer 2013). To account for the role of party characteristics in the election of women MPs, we gathered and coded a dichotomous variable capturing whether the RRP party had a woman leader at the time of the last election or not; this data extended Greene and O'Brien's (2016) data on women party leaders by 10 countries and 77 parties to a total of 30 countries and 187 parties. In light of O'Brien's (2015) idea that a party's governmental status may modify its incentives to elect more women, we include a dichotomous variable coded 1 if the party was in the governing cabinet following the previous election and 0 if not.

Some previous research suggests that party centralization may benefit women's election (Aldrich 2020; Kittilson 2006). Our research design, focusing on RRP parties, largely controls for this factor because most RRP parties have highly centralized organizations, often built around strong authoritarian and charismatic leaders (Mudde 2007). Similarly, our focus on RRP parties controls for party ideology. Lastly, we also include a time trend and a variable distinguishing Western and Eastern European countries to account for any broad cultural and political disparities across the regions. Table A2 in the Appendix presents summary statistics.

## MULTILEVEL ANALYSIS

We estimate multilevel random intercept models (using R version 4.1.2.) to test the effects of electoral success and gender gap on the proportion of women MPs in RRP parties. Unlike ordinary least squares models, these models allow us to account for the nested nature of the data, with parties nested within countries (Gelman and Hill 2007). Table 1 presents multiple models: Model 1 includes only direct effects of our two focus variables, and Model 2 includes an interaction term between electoral success and M/F voter ratio, to investigate our expectations that the proportion of women MPs will be higher among those RRP parties facing both an electoral loss and a large gender gap. Subsequent models add controls to the interaction: Model 3 includes a time trend, Model 4 adds party-level covariates, and Model 5 adds national-level covariates. The different models allow us to test whether our main findings hold with the inclusion of various party and context-control variables.

As can be seen from Models 2–5 in Table 1, we find that the interaction of lagged gender gap in voter support and vote change is statistically significant and in the expected negative direction across all models: when RRP parties are struggling electorally (negative vote change) and have disproportionately more men voters, they have a higher percentage of women MPs compared with parties not facing both conditions.

To more easily interpret the findings of this interactive story, we plot the marginal effects of M/F voter ratio on the percentage of women MPs as it varies by level of electoral success in Figure 5.<sup>11</sup> Following the logic of strategic descriptive representation, we find support for Hypothesis 1a: the effect of the M/F voter ratio on the proportion of women in the party is positive and significant when the party faces electoral losses (vote change is negative). This positive significant effect emerges for levels of vote change of -3 percentage points and lower. At the same time, when RRPs are doing well (vote change is positive and greater than or equal to +1), we see the opposite: the effect of the M/F voter ratio is negative and significant. Consistent with Hypothesis 1b of strategic exclusion, when RRP parties are gaining votes despite having disproportionately more men voters, they have a lower percentage of women MPs.

In order to translate our results into meaningful quantities of interest (King, Tomz, and Wittenberg 2000), we calculate the conditional predicted values of the dependent variable—percentage of women MPs—for parties that are gaining versus losing votes, across different M/F voter ratios. For example, when a RRP party has a men-dominated electorate (M/F Voter Ratio of 2), the predicted value of women in the party is 14% if the party is gaining votes (when Vote Change is +5) but 20% if losing votes (when Vote Change is -5). As expected, we see the opposite when a RRP party is women-dominated (M/F Voter Ratio of 0.5): the predicted value of women in the party is 21% if the party is gaining votes (when Vote Change is +5) and 14% if losing votes (when Vote Change is -5).

In summary, the evidence suggests that, for RRP parties, the conditions of electoral change and a men-dominated electorate lead the party to respond with strategic increases in women's descriptive representation in times of threat and an abandonment of (or at least no increase in) women parliamentarians in times of electoral success. These findings paint the picture of an RRP party family searching for new electoral strategies when old tactics fail, and doubling down on existing tactics when proven effective.

The results from Table 1 also indicate the continued importance of some structural variables identified by past work. We find support for the claim that parties have higher levels of women representatives when

<sup>10</sup> Data on electoral system type come from the Comparative Political Data Set (Armingeon et al. 2020). Average district magnitude data for the first legislative tier is from Bormann and Golder (2013), with the time coverage extended by the authors. Data on national gender quota laws comes from Weeks (Forthcoming).

<sup>11</sup> Support for our theory of strategic descriptive representation continues to emerge when we consider the results of the second marginal effects plot, which shows that the effect of parties' electoral vulnerability on the share of women MPs varies by the level of male/female voter ratio. See Figure A3 in the Appendix.



**TABLE 1. Determinants of Women's Representation in Radical Right Populist Parties**

	Model 1	Model 2	Model 3	Model 4	Model 5
M/F ratio <sub>(t-1)</sub>	-0.551 (0.486)	-0.551 (0.478)	-0.630 (0.432)	-0.727 (0.432)	-0.605 (0.431)
Vote change <sub>(t-1)</sub>	-0.166 (0.178)	0.840 (0.538)	0.896 (0.492)	0.988 (0.508)	1.154* (0.506)
Time			0.479** (0.149)	0.480** (0.149)	0.151 (0.177)
Woman leader <sub>(t-1)</sub>				-0.035 (3.785)	1.153 (3.504)
Cabinet party <sub>(t-1)</sub>				-3.980 (2.451)	-3.511 (2.453)
Women in Parliament <sub>(t-1)</sub>					0.461* (0.183)
District magnitude					-0.007 (0.037)
PR electoral system					1.093 (4.287)
Quota law					6.561 (3.444)
Western Europe					-2.215 (3.908)
M/F ratio <sub>(t-1)</sub> × Vote change <sub>(t-1)</sub>		-0.663* (0.338)	-0.668* (0.308)	-0.760* (0.319)	-0.868** (0.317)
Constant	21.318*** (2.360)	20.684*** (2.271)	-941.659** (298.581)	-942.046** (299.696)	-294.866 (353.765)
Random-effect party	0	1.144	0	0	0
Random-effect country	65.97	57.154	56.16	49.58	23.91
Random-effect residual	50.33	47.999	39.29	38.64	39.01
N	58	58	58	58	58
Log Likelihood	-210.194	-208.362	-203.640	-202.374	-197.883
AIC	432.387	430.723	423.279	424.748	425.765
BIC	444.750	445.146	439.763	445.352	456.672
N countries	19	19	19	19	19
N parties	22	22	22	22	22

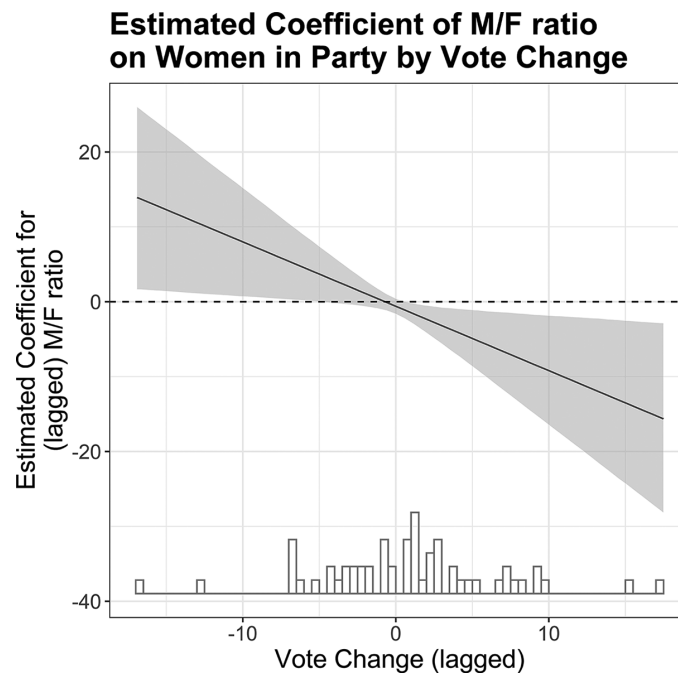
Note: Results are based on multilevel analyses with random intercepts for the country and party levels of the data. The dependent variable is the percentage of women among the RRP parties' MPs in national, lower-chamber legislature. Standard errors in parentheses; \*\*\* $p < 0.001$ , \*\* $p < 0.01$ , \* $p < 0.05$ .

there is a national norm for having a large proportion of women in the parliament. We also find that legislated gender quotas are borderline significant ( $p = 0.06$ ) in the expected positive direction. Consistent with the results of the party-level analyses of O'Brien (2018), we do not find that the measures of institutional permissiveness—district magnitude and proportional representation—have a significant effect on women MPs in RRP parties, nor do women leaders increase women in RRP parliamentary parties. Moreover, the addition of these variables does not alter the explanatory strength of the strategic descriptive representation factors.

## ROBUSTNESS CHECKS

To ensure that our findings are not the result of model misspecification, we also estimate models that use ordinary least squares. The main findings are robust to these alternative specifications (see Appendix Table A3). The marginal effects plots (Figure 5 and

Figure A3) reveal an outlier for M/F voter ratio, which is most likely due to survey sampling issues (niche parties, like RRP parties, often having few supporters to begin with). To check that extreme values in M/F voter ratio due to survey sampling issues are not biasing our results, we rerun the analysis excluding M/F voter ratio values over 10; the results continue to hold (see Appendix Table A4, Model 1). One concern is that the results could be an artifact of good electoral scores, rather than strategic incentives of parties. For example, if a RRP party was doing poorly, it might decide to reach out to the median voter; if this tactic is successful in attracting more votes and gaining more seats, then the election of more women who are placed further down the list could be unintended. We note that if this were the case, we would expect to see more women elected when the RRP party does well overall, but we do not see this. Table 1 Model 1 shows no evidence of an effect of electoral change on the share of women in RRP parties on its own. An additional analysis of the most inclusive model (Table 1 Model 5), but with no

**FIGURE 5. Marginal Effects of Male/Female Voter Ratio on Share of Women in Radical Right Populist Parties as a Function of Party Vote Change**

Note: Estimated coefficients are based on regression results shown in Table 1, Model 5, and 95% confidence intervals are shown, along with a rug plot along the x-axis.

interaction term (see Table A5 in the Appendix), finds the same result: being electorally vulnerable alone does not increase levels of women MPs within RRP parties.

Another alternative explanation is that RRP parties might not experience electoral threat, but be motivated to increase gender diversity to combat their outsider reputation. If this is true, we should see RRP parties (perhaps especially those with highly male-dominated electorates, more likely to be seen as extremist) increase women's representation in the party independently of electoral threat. We find no evidence of this in either Table 1 Model 1 or Table A5 in the Appendix. The gender gap in voting is only significant when combined with electoral change, in line with our theory.

### CASE STUDIES: ARE RRP PARTIES STRATEGIC?

The quantitative results are consistent with our strategic descriptive representation theory and run counter to alternative hypotheses. To increase our confidence in the strategic nature of our finding of increased women MPs under conditions of electoral threat and a gender gap in voting, we consider the parties' motivations. In this section, we turn to illustrative case studies. Although space limitations prevent us from providing the comprehensive qualitative analysis necessary to fully investigate the causal mechanisms driving party strategies, the brief descriptions we present

help to assess the plausibility of and strategic logic behind our observed statistical relationships (Lieberman 2005). These illustrative cases also allow us to highlight different presentations of the candidate *selection* and *placement* decisions behind the election of more women.

Following Seawright and Gerring (2008) and Lieberman (2005) for regression models yielding results consistent with theory expectations, we examine two "typical" cases that are well-predicted by the statistical models—the SVP in Switzerland in 2015 and the Party of Freedom (PVV) in the Netherlands in 2017.<sup>12</sup> In both cases, the alternative hypotheses investigated here are not supported; neither country had a nationally legislated gender quota implemented before the election in question (or at all); both parties were lacking women party leaders; and, based on the socialization argument about gender equality norms (e.g., Erzeel and Rashkova 2017), any increases in women MPs should have followed electoral success. Rather, the key conditions behind the strategic descriptive representation theory—a gender gap in voting and electoral threat—are present, with the PVV facing a more dire situation than its Swiss

<sup>12</sup> Based on Table 1 Model 5, the residuals for PVV 2017 and SVP 2015 are 4.7 and 1.4, respectively, both well within the common benchmark of one standard deviation (8.3) to separate typical and deviant cases. See Appendix A2 for further details on case study selection.

counterpart. Relying on primary and secondary resources, including news articles and candidate list position data, we see evidence in both cases of RRP party campaigns using women MP candidates—either in greater numbers or higher list positions—as a strategy to explicitly target women voters.

### Switzerland 2015: “Swiss Girls Vote SVP”

The SVP has long been considered a *Männerpartei*, mainly represented and elected by men. And yet, in 2015, following an electoral loss in 2011 and faced with a significant gender gap (M/F ratio of 1.3), the SVP engaged in deliberate tactics to appeal to this under-tapped female constituency. Under the centralized party organization led by Toni Brunner (Buhmann, Zumbach, and Gerber 2016; Mazzoleni 2012), the SVP ran more women (82 candidates, 10 more than in the previous 2011 election) and built an advertising campaign around these women candidates. As shown in Figure 6, the Party indeed “decorated its campaign with women” (translation, “What do You Guys Have?” 2015). The message behind “Swiss Girls Vote JSVP [the Youth wing of the SVP]” was simple: (young) women should vote for the SVP because its candidates looked like them. As noted in Figure 6, gone was the SVP of “only old, shaggy men.”

In addition to increasing the number of women candidates, the SVP put them in winnable positions (Gilardi 2015b). In 2015, the share of SVP women candidates (19%) compared with elected women MPs (17%) was nearly 1 to 1 for the first time; it had ranged from 1.7 to 3.5 candidates per elected women MP in the five previous elections.<sup>13</sup> Like this national campaign, regional SVP campaigns also revealed deliberate strategies to attract women voters. In the canton of Solothurne, for example, the SVP nominated an all-women’s list and founded a women’s section one month before the election. Local party president Silvio Jeker claimed that the SVP had, “a good basis to now gain a foothold with women,” while then local party vice president Christine Rütli said in a speech to party members, “we need more middle-class women.”<sup>14</sup> As a result, the women’s share of elected SVP MPs rose by six percentage points from the previous election, reaching 17% of the delegation. With this election, the SVP also closed their gender gap in voter support. In fact, analysts credited the SVP’s vote share gains in 2015 explicitly to an increase in women voters (Foppa 2015).

### The Netherlands 2017: “Geert’s Angels”

The Dutch PVV Party also exhibited an election strategy targeting women voters with women’s faces in 2017. Geert Wilders has been head of the PVV

since he founded the party in 2006 and maintains strong control over candidate selection as leader (De Lange and Art 2011). He has a reputation as being calculating and media-savvy—and one of the “most strategic” politicians out there.<sup>15</sup> In 2017, the conditions were ripe for the party to pursue an inclusive form of strategic descriptive representation. The PVV had lost votes in the previous 2012 parliamentary elections (10.1% compared with 15.5% in 2010), and they faced a high gender gap (M/F voter ratio of 1.58) in their electoral support. In line with our theory, in 2017, the PVV presented a party list top-heavy with women MP candidates: the prized second and third spots on the list were both occupied by women. Wilders announced the party list with a photo shoot of the top three candidates: himself flanked by the two women, Fleur Agema and Vicky Maijer. The news made the front page of the largest Dutch daily, *De Telegraaf*, with the headline, “Geert’s Angels” (Figure 7). Wilders himself acknowledged that the placement of the women was part of a tactic to draw a broader electorate to the PVV. In an interview with *De Telegraaf*, he said, “The supporters of the PVV range from low to highly educated, from man to woman, from native to immigrant.”<sup>16</sup>

In contrast to the Swiss SVP’s strategic inclusion tactic, the PVV did not increase the share of women candidates on the list: in 2012, 28% of the candidates were women, compared with 26% in 2017. But more women were placed higher on the list in 2017, and two of the top three candidates were women.<sup>17</sup> The party’s strategy was also markedly different from that pursued by the PVV five years earlier when the PVV did not emphasize women in their campaign or media coverage.<sup>18</sup> This de-emphasis is further evidence of their 2012 strategic exclusion tactic consistent with our theory’s predictions for an electorally strong (vote gain = 10% from 2006 to 2010), male-dominated (M/F = 1.25) party. As a result of the greater prioritization of women candidates on the party list in 2017, the share of women MPs

<sup>15</sup> Sarah de Lange quoted in Allissa J. Rubin, “Geert Wilders, Reclusive Provocateur, Rises before Dutch Vote.” *The New York Times*, February 27, 2017.

<sup>16</sup> Niels Rigter and Lise Witteman. “Geert’s Angels: Wilders ‘as happy as a child.’” *De Telegraaf*, January 6, 2017.

<sup>17</sup> Our two cases highlight different approaches to strategic descriptive representation: parties can add more women to the list or place more women in winnable positions. Whereas a comprehensive cross-national examination of causes behind these different modalities is the subject for a future study, previous research suggests that electoral system characteristics differentially incentivize party elites to select women (Valdini 2012). Although Switzerland and the Netherlands both have PR systems, significant differences in their electoral rules and how votes are aggregated may explain variation in approaches.

<sup>18</sup> While the inclusion of women in the top three of the 2017 list was discussed in multiple mainstream media, including *RTL Nieuws*, *Trouw*, and *De Telegraaf*, there were no such reports for the 2012 elections.

<sup>13</sup> Candidate data come from the Switzerland Federal Statistics Bureau, <https://www.bfs.admin.ch/>.

<sup>14</sup> Altermatte, Sven. “SVP nominiert zuerst Frauenliste und gründet dann eine Frauensektion.” *Solothurner Zeitung*, September 18, 2015.

FIGURE 6. Swiss Girls Vote JSVP

« IN DER SVP SIND NUR... »

Junge SVP

ALTE

SCHRUMPLIGE

MÄNNER

SWISS GIRLS VOTE JSVP!

Nationalrats- und Ständeratswahlen vom 18. Oktober 2015

Fotos: Die 33 JSVP-Kandidatinnen für den Nationalrat

increased from 20% in 2012 to 30%. The 2017 inclusive strategy also seems to have worked in terms of attracting women: in 2017, 45% of the party's voters were women, versus 40% in 2012, and the PVV's vote share increased by about 3 percentage points.

**DO ALL PARTIES EXHIBIT STRATEGIC DESCRIPTIVE REPRESENTATION OF WOMEN?**

Having identified strategic descriptive representation as a tool employed by RRP parties, we might ask to

FIGURE 7. Geert's Angels: Cover of *De Telegraaf*, January 6, 2017

what extent RRP parties are unique in employing strategic descriptive representation. To test the bounds of the generalizability of our argument, we replicate our models of women MPs using the full dataset of all European parties. We consider the effect of our key variables both with all parties pooled (Table 2) and within each party family individually (Table 3). The results suggest that the strategy of gender-based descriptive representation is not universally employed by all parties.<sup>19</sup> As shown in Table 2, the coefficient of the interaction between lagged vote change and M/F voter ratio is in the expected direction but does not reach statistical significance in any model. This insignificant relationship is further confirmed by the marginal effects plot presented in Appendix Figure A4.

However, more nuanced conclusions emerge if we disaggregate the analyses by party family. In Table 3, we replicate the most complete model of women MPs

for each party separately. Although the interaction between M/F ratio and vote change is not statistically significant for most families, the interaction has a negative and significant coefficient for the Christian Democratic party family, suggesting a similar conditional effect of electoral success and gender gap in voter support on their percentage of women MPs as among the RRP parties; this conclusion is reinforced by the marginal effect plot Figure A5 in the Appendix. However, further consideration of the values of their M/F ratio variable indicates that their dilemma is not about how to recruit women voters. Because the Christian Democratic parties face no relative paucity in women voters (they have an average M/F ratio below 1, placing them in the left half of Figure 3), the interaction effect means that they take an opposite tack when electorally vulnerable. Consistent with the need to recruit undertapped constituencies, they pursue a higher percentage of men MPs. The Christian Democratic approach may well then be one of the strategic descriptive representation of men.

## CONCLUSION

RRP parties have seen increasing success across post-industrial democracies over the past 40 years. While the

<sup>19</sup> As in the RRP party-only models, the models in Table 2 do not show much support for the control variables. Only time—for some models—and women in parliament are statistically significant. Quota laws show a borderline positive effect ( $p = 0.07$ ). These largely null findings are consistent with the broader research on women's representation using party-level data (e.g., O'Brien 2018; Tremblay and Pelletier 2001).

**TABLE 2. Determinants of Women's Representation in All Party Families**

	Model 1	Model 2	Model 3	Model 4	Model 5
M/F ratio <sub>(t-1)</sub>	-0.713 (0.750)	-0.743 (0.753)	-0.795 (0.725)	-0.533 (0.715)	-0.586 (0.677)
Vote change <sub>(t-1)</sub>	-0.165 (0.089)	-0.048 (0.314)	0.056 (0.301)	0.069 (0.291)	0.302 (0.284)
Time			0.509*** (0.069)	0.485*** (0.067)	0.014 (0.092)
Woman leader <sub>(t-1)</sub>				0.833 (1.537)	0.831 (1.495)
Cabinet party <sub>(t-1)</sub>				-0.487 (1.094)	-0.407 (1.062)
Women in Parliament <sub>(t-1)</sub>					0.699*** (0.087)
District magnitude					-0.010 (0.023)
Modified PR electoral system					1.334 (6.199)
PR electoral system					2.937 (5.672)
Quota law					2.906 (1.636)
Western Europe					2.085 (2.452)
M/F ratio <sub>(t-1)</sub> × Vote change <sub>(t-1)</sub>		-0.116 (0.296)	-0.160 (0.284)	-0.159 (0.272)	-0.348 (0.266)
Constant	27.346*** (1.965)	27.369*** (1.971)	-994.812*** (138.625)	-947.525*** (134.302)	-21.397 (184.543)
Random-effect party	109.7	109.27	103.73	109.3	100.4
Random-effect country	59.2	59.85	58.57	57.6	0
Random-effect residual	137.3	137.32	125.34	112	106.1
N	632	632	632	622	613
Log Likelihood	-2,579.569	-2,579.493	-2,553.447	-2,487.930	-2,417.183
AIC	5,171.138	5,172.987	5,122.894	4,995.859	4,866.366
BIC	5,197.832	5,204.129	5,158.485	5,040.189	4,937.060
N countries	30	30	30	30	29
N parties	180	180	180	177	175

*Note:* Results are based on multilevel analyses with random intercepts for the country and party levels of the data. Dependent variable is the percentage of women among a party's MPs in the national, lower-chamber legislature. Standard errors in parentheses; \*\*\* $p < 0.001$ , \*\* $p < 0.01$ , \* $p < 0.05$ .

field now knows much about the characteristics of these parties (e.g., Arzheimer 2018; Kitschelt 1995; Meguid 2005; 2008; Mudde 2007; Rovny 2013) and causes and consequences of their electoral support and governmental presence (e.g., Abou-Chadi 2016; Bischof and Wagner 2019; Kitschelt 1995; Wagner and Meyer 2017), much less is known about why there has been an increase in women MPs among some of these traditionally men-dominated parties.

We build on the existing literature on party strategic behavior to answer this question by identifying the conditions under which RRP parties are most likely to use strategic descriptive representation and by testing our argument with novel cross-national data. We argue that electorally weak political parties fundamentally seek out untapped constituencies. For weak parties lacking women voters, bolstering women's descriptive representation becomes a relatively low-cost tool for broadening their electorate and increasing their vote share. Based on data from 22 European RRP

parties in 19 countries from 1985 to 2018 and qualitative evidence of party tactics of the Swiss SVP and Dutch PVV, our analyses find support for this strategic story. In other words, women's representation in RRP parties increased neither because parties' decisions reflect broader societal change nor because improving the quality of political representation is a normative good. Instead, parties made a strategic calculation that increasing women is electorally useful.

Our paper makes several empirical and theoretical contributions. First, the paper introduces a new dataset, expanding our knowledge of women's roles as party leaders, MPs, and voters. These data allow us to understand the changing characteristics of RRP parties, both in contrast to other party families and in relation to their RRP colleagues. As highlighted in this study, we now have time-series data to support the case-based findings of the substantial gender gaps in RRP party votes. With this information, we are able to not only trace gender differences in voter support for RRP

**TABLE 3. Determinants of Women's Representation by Party Family**

	Model 1	Model 2	Model 3	Model 4	Model 5
	(Christian Dem)	(Conservative)	(Green/New Left)	(Liberal)	(Social Dem)
M/F ratio <sub>(t-1)</sub>	-1.521 (2.672)	-2.962 (5.073)	-9.233 (5.090)	2.828 (3.579)	-0.855 (2.377)
Vote change <sub>(t-1)</sub>	1.224* (0.498)	-1.607* (0.806)	-0.705 (1.481)	1.700 (1.329)	0.452 (0.551)
Time	-0.176 (0.147)	-0.175 (0.175)	-0.035 (0.261)	-0.006 (0.258)	0.144 (0.124)
Women leader <sub>(t-1)</sub>	3.007 (2.807)	-2.728 (3.631)	2.487 (3.277)	8.198* (4.012)	-2.177 (2.653)
Cabinet party <sub>(t-1)</sub>	1.796 (1.756)	0.346 (2.270)	3.310 (4.791)	-3.214 (3.158)	-2.883* (1.393)
Women in Parliament <sub>(t-1)</sub>	0.883*** (0.152)	1.013*** (0.128)	0.258 (0.212)	0.605** (0.213)	0.898*** (0.122)
District magnitude	-0.031 (0.028)	0.528 (0.300)	0.041 (0.052)	0.012 (0.029)	-0.008 (0.038)
Modified proportional representation		1.996 (4.941)	-5.458 (16.688)		1.117 (9.012)
Proportional representation	-9.017 (9.096)	-0.655 (4.514)	5.825 (15.758)	8.635 (10.402)	-4.885 (7.284)
Quota law	4.681 (2.778)	1.622 (3.212)	-1.384 (4.264)	8.787 (5.595)	1.678 (2.163)
Western Europe	-1.714 (4.179)	-4.639 (3.642)	0.828 (10.766)	0.882 (5.785)	6.580 (3.655)
M/F ratio <sub>(t-1)</sub> × Vote change <sub>(t-1)</sub>	-1.507** (0.529)	1.496 (0.803)	0.852 (1.624)	-1.369 (1.272)	-0.360 (0.564)
Constant	363.777 (293.287)	352.072 (351.867)	102.110 (525.298)	12.142 (516.986)	-280.175 (249.088)
Random-effect party	45.88	0	58.83	0	0
Random-effect country	0	0	0	0	42.98
Random-effect residual	46.75	74.19	169.11	174.4	35.72
N	102	72	110	81	125
Log likelihood	-360.071	-257.200	-449.787	-324.047	-424.264
AIC	750.141	546.400	931.575	678.094	880.528
BIC	789.516	582.827	974.783	714.011	925.781
N countries	20	16	18	17	26
N parties	27	18	30	25	30

Note: Dependent variable is the percentage of women among the party's MPs in the national, lower-chamber legislature. Standard errors in parentheses; \*\*\* $p < 0.001$ , \*\* $p < 0.01$ , \* $p < 0.05$ .

parties over time, but we can advance the work on gender gaps by examining how they condition party behavior.

Second, we develop a comprehensive theory of the conditions under which parties engage in strategic descriptive representation. We suggest that RRP parties seeking to tap into a new female constituency are not limited to engaging in costly programmatic shifts along their dominant issue axis or in the addition of a new issue. Of course, the new women MPs may bring their own policy ideas and priorities, eventually diversifying the party platform, but this effect is secondary and delayed in time, and may not be as visible to existing voters as a purely programmatic strategy to attract different voter bases.

Our study has potential implications beyond *Männerparteien*. First, the utility of strategic descriptive

representation is not limited to this party family. In theory, any party that needs to broaden its electoral support, while simultaneously suffering from a deficit in women's votes could look to promote more women for parliamentary office. Our extension of the analyses to all European parties reveals that Christian Democratic parties similarly see gender as a tool for bolstering their electoral fortunes, in their case, using men to counter their women-dominated electorate. For other party families, many of the key conditions for strategic descriptive representation by gender appear to be absent. For instance, Green and Social Democratic parties have relatively high proportions of women voters and MPs already. In such parties with more gender egalitarian ideology and high representation of women voters and MPs, there is less room to maneuver in attracting more women voters and electing more

women. Additional qualitative research, including interviews with party leaders, MPs, and candidates, would help to further confirm the reasons why some party families are more likely to use strategic descriptive representation than others. Second, our findings raise another question for future studies: are the women elected as part of strategic descriptive representation qualitatively different from those elected under other conditions? In a party's effort to attract women voters while at the same time reducing men's opposition to such a strategy, perhaps these women candidates are more likely to toe the party line, be members of the party leadership dynasty, or young and attractive, as the SVP campaign materials (Figure 6) suggest (Bernhard 2018).

While the current study focuses on gender, we might expect to see strategic descriptive representation used to target other untapped groups in the electorate. Parties that struggle to gain support from younger voters may choose to elect more young people as their MPs. Similarly, in line with the rise of *homonationalist* appeals by RRP parties linking the protection of LGBTI citizens to campaigns against Muslim immigrants (Spierings 2021), we might see parties promote LGBTI candidates to attract similarly identifying voters. While there are some notable examples of LGBTI RRP leaders (e.g., Alice Weidel and Pim Fortuyn), future research should systematically investigate the extent to which strategic descriptive representation is leveraged by RRP and other parties to appeal to a variety of underrepresented groups beyond women.

In addition to broadening the investigation of the limits of a descriptive representation strategy, this paper also raises questions about other dimensions of strategic representation tactics. Future research could add strategic *substantive* representation (representing the interests or preferences of certain groups) to the study of strategic representation. Just as increasing visible images of gender equality may lead more women to support a party, a similar vote gain to a male-dominated electorally threatened RRP party could result from its shift in emphasis toward issues that are attractive to women. Questions about the relative effectiveness of descriptive versus programmatic gender equality among RRP parties as well as the lasting implications of each for the quality of women's representation are a subject for future work.

## SUPPLEMENTARY MATERIALS

To view supplementary material for this article, please visit <http://doi.org/10.1017/S0003055422000107>.

## DATA AVAILABILITY STATEMENT

Research documentation and data that support the findings of this study are openly available at the American Political Science Review Dataverse: <https://doi.org/10.7910/DVN/SG55BJ>.

## ACKNOWLEDGMENTS

We thank the editors and anonymous reviewers of the *APSR*, Rachel Bernhard, Louise Davidson-Schmich, Russell Dalton, Fabio Ellger, Gretchen Helmke, Alice Kang, Mona Morgan-Collins, and Soledad Prillaman, as well as participants at the “Causes and Consequences of Party Positions” panel at the 2020 APSA Meeting, the UCL Political Science Seminar, and the “Party Competition in the Electoral Cycle” workshop for their helpful comments on previous versions of this paper. We thank YeonKyung Jeong and Sami Gul for their excellent research assistance.

## CONFLICT OF INTEREST

The authors declare no ethical issues or conflicts of interest in this research.

## ETHICAL STANDARDS

The authors affirm this research did not involve human subjects.

## REFERENCES

- Abou-Chadi, Tarik. 2016. “Niche Party Success and Mainstream Party Policy Shifts: How Green and Radical Right Parties Differ in Their Impact.” *British Journal of Political Science* 46 (2): 417–36.
- Adams, James, Michael Clark, Lawrence Ezrow, and Garrett Glasgow. 2004. “Understanding Change and Stability in Party Ideologies: Do Parties Respond to Public Opinion or to Past Election Results?” *British Journal of Political Science* 34 (4): 589–610.
- Adams, James, and Zeynep Somer-Topcu. 2009. “Moderate Now, Win Votes Later: The Electoral Consequences of Parties’ Policy Shifts in Twenty-Five Postwar Democracies.” *Journal of Politics* 71 (2): 678–92.
- Akerman, Tjitske. 2015. “Gender and the Radical Right in Western Europe: A Comparative Analysis of Policy Agendas.” *Patterns of Prejudice* 49 (1–2): 37–60.
- Aldrich, Andrea. 2020. “Party Organization and Gender in European Elections.” *Party Politics* 26 (5): 675–88.
- Armingeon, Klaus, Virginia Wenger, Fiona Wiedemeier, Christian Isler, Laura Knöpfel, David Weisstanner, and Sarah Engler. 2020. *Comparative Political Data Set 1960–2018* [computer file]. Zurich: Institute of Political Science [distributor], University of Zurich.
- Arzheimer, Kai. 2018. “Explaining Electoral Support for the Radical Right.” In *The Oxford Handbook of the Radical Right*, ed. Jens Rydgren, 143–65. Oxford: Oxford University Press.
- Banducci, Susan, and Jeffrey Karp. 2000. “Gender, Leadership and Choice in Multiparty Systems.” *Political Research Quarterly* 53 (4): 815–48.
- Bernhard, Rachel. 2018. “Tinder Decides: Mate Desirability Influences Votes.” Paper presented at the Annual Meeting of the American Political Science Association, Boston, MA. <https://rachel-bernhard.squarespace.com/s/Tinder-Decides-82218.pdf>.
- Bischof, Daniel, and Markus Wagner. 2019. Do Voters Polarize When Radical Parties Enter Parliament? *American Journal of Political Science* 63 (4): 888–904.
- Boak, Helen. 1989. “‘Our Last Hope’: Women’s Votes for Hitler: A Reappraisal.” *German Studies Review* 12 (2): 289–310.
- Bobo, Lawrence, and Franklin D. Gilliam Jr. 1990. “Race, Sociopolitical Participation and Black Empowerment.” *American Political Science Review* 84 (2): 377–93.



- Bormann, Nils-Christian, and Matt Golder. 2013. "Democratic Electoral Systems around the World, 1946–2011." *Electoral Studies* 32 (2): 360–69.
- Box-Steffensmeier, Janet, David C. Kimball, Scott R. Meinke, and Katherine Tate. 2003. "The Effects of Political Representation on the Electoral Advantages of House Incumbents." *Political Research Quarterly* 56 (3): 259–70.
- Buhlmann, Marc, David Zumbach, and Marlene Gerber. 2016. "Campaign Strategies in the 2015 Swiss National Elections." *Swiss Political Science Review* 22 (1): 15–28.
- Bustikova, Lenka. 2014. "Revenge of the Radical Right." *Comparative Political Studies* 47 (12): 1738–65.
- Campbell, Rosie. 2016. "Representing Women Voters: The Role of the Gender Gap and the Response of Political Parties." *Party Politics* 22 (5): 587–97.
- Caul, Miki. 1999. "Women's Representation in Parliament: The Role of Political Parties." *Party Politics* 5 (1): 79–98.
- Celis, Karen, and Sarah Childs. 2020. *Feminist Democratic Representation*. Oxford: Oxford University Press.
- Celis, Karen, and Sarah Childs. 2012. "The Substantive Representation of Women: What to Do with Conservative Claims?" *Political Studies* 60 (1): 213–25.
- Childs, Sarah. 2008. *Women and British Party Politics*. London: Routledge.
- Childs, Sarah, and Miki Caul Kittilson. 2016. "Feminizing Political Parties: Women's Party Member Organizations within European Parliamentary Parties." *Party Politics* 22 (5): 598–608.
- Childs, Sarah, and Paul Webb. 2012. *Sex, Gender and the Conservative Party: From Iron Lady to Kitten Heels*. Basingstoke, UK: Palgrave.
- Coffé, Hilde. 2018. "Gender and the Radical Right." In *The Oxford Handbook of the Radical Right*, ed. Jens Rydgren, 200–11. Oxford: Oxford University Press.
- Coffé, Hilde. 2019. "Gender, Gendered Personality Traits and Radical Right Populist Voting." *Politics* 39 (2): 170–85.
- Dahlerup, Drude, and Lenita Freidenvall. 2005. "Quotas as a 'Fast Track' to Equal Representation for Women: Why Scandinavia Is No Longer the Model." *International Feminist Journal of Politics* 7 (1): 26–48.
- Dancygier, Rafaela M. 2017. *Dilemmas of Inclusion: Muslims in European Politics*. Princeton, NJ: Princeton University Press.
- De Lange, Sarah L., and David Art. 2011. "Fortuyn versus Wilders: An Agency-Based Approach to Radical Right Party Building." *West European Politics* 34 (6): 1229–49.
- De Lange, Sarah L., and Liza Mügge. 2015. "Gender and Right-Wing Populism in the Low Countries: Ideological Variations across Parties and Time." *Patterns of Prejudice* 49 (1–2): 61–80.
- Donno, Daniela, and Anne-Kathrin Kreft. 2019. "Authoritarian Institutions and Women's Rights." *Comparative Political Studies* 52 (5): 720–53.
- Downs, Anthony. 1957. *An Economic Theory of Democracy*. New York: Harper Collins.
- Eagle, Maria, and Joni Lovenduski. 1998. *High Time or High Tide for Labour Women*. London: Fabian Society.
- Erzeel, Silvia, and Ekaterina R. Rashkova. 2017. "Still Men's Parties? Gender and the Radical Right in Comparative Perspective." *West European Politics* 40 (4): 812–20.
- Farris, Sara R. 2017. *In the Name of Women's Rights: The Rise of Femonationalism*. Durham, NC: Duke University Press.
- Folke, Olle, Johanna Rickne, and Daniel M. Smith. 2021. "Gender and Dynastic Political Selection." *Comparative Political Studies* 54 (2): 339–71.
- Foppa, Daniel. 2015. "The SVP Score Points with the Women." *Tages Anzeiger* (blog). October 21.
- Fortin-Rittenberger, Jessica, and Berthold Rittenberger. 2015. "Nominating Women for Europe: Exploring the Role of Political Parties' Recruitment Procedures for European Parliament Elections." *European Journal of Political Research* 54 (4): 767–83.
- Gellman, Andrew, and Jennifer Hill. 2007. *Data Analysis Using Regression and Multilevel/Hierarchical Models*. Cambridge: Cambridge University Press.
- Gidengil, Elisabeth, Matthew Hennigar, André Blais, and Neil Nevitte. 2005. "Explaining the Gender Gap in Support for the New Right: The Case of Canada." *Comparative Political Studies* 38 (10): 1171–95.
- Gilardi, Fabrizio. 2015a. "The Temporary Importance of Role Models for Women's Political Representation." *American Journal of Political Science* 59 (4): 957–70.
- Gilardi, Fabrizio. 2015b. "Women on the National Council Lists." *DeFacto* (blog). October 2. <https://www.defacto.expert/2015/10/02/listenplatz-frauen/>.
- Givens, Terri E. 2004. "The Radical Right Gender Gap." *Comparative Political Studies* 37 (1): 30–54.
- Goodyear-Grant, Elizabeth. 2010. "Who Votes for Women Candidates and Why?" In *Voting Behaviour in Canada*, eds. Cameron Anderson and Laura Stephenson, 43–64. Vancouver: UBC Press.
- Greene, Zachary, and Diana Z. O'Brien. 2016. "Diverse Parties, Diverse Agendas? Female Politicians and the Parliamentary Party's Role in Platform Formation." *European Journal of Political Research* 55 (3): 435–53.
- Harteveld, Eelco, and Elisabeth Ivarsflaten. 2018. "Why Women Avoid the Radical Right: Internalized Norms and Policy Reputations." *British Journal of Political Science* 48 (2): 369–84.
- Harteveld, Eelco, Wouter Van Der Brug, Stefan Dahlberg, and Andrej Kokkonen, A. 2015. "The Gender Gap in Radical Right Voting: Examining the Demand Side in Western and Eastern Europe." *Patterns of Prejudice* 49 (1–2): 103–34.
- Hazan, Reuven Y., and Gideon Rahat. 2010. *Democracy within Parties: Candidate Selection Methods and Their Political Consequences*. Oxford: Oxford University Press.
- Immerzeel, Tim, Hilde Coffé, and Tanja van der Lippe. 2015. "Explaining the Gender Gap in Radical Right Voting: A Cross-National Investigation in 12 Western-European Countries." *Comparative European Politics* 13 (2): 263–86.
- Inglehart, Ronald F and Pippa Norris. 2016. "Trump, Brexit and the Rise of Populism: Economic Have-Nots and Cultural Backlash." Paper presented at the Annual Meeting of the American Political Science Association, Philadelphia, PA.
- Jones, Mark. 2004. "Quota Legislation and the Election of Women." *Journal of Politics* 66 (4): 1203–23.
- Keith, Daniel James, and Tânia Verge. 2018. "Nonmainstream Left Parties and Women's Representation in Western Europe." *Party Politics* 24 (4): 397–409.
- Kenny, Meryl. 2013. *Gender and Political Recruitment: Theorizing Institutional Change*. New York: Palgrave Macmillan.
- Kitschelt, Herbert. 1995. *The Radical Right in Western Europe: A Comparative Analysis*. Ann Arbor: University of Michigan Press.
- Kittilson, Miki Caul. 2006. *Challenging Parties, Changing Parliaments: Women and Elected Office in Contemporary Western Europe*. Columbus: Ohio State University Press.
- Kittilson, Miki Caul. 2008. "Representing Women: The Adoption of Family Leave Policies in Comparative Perspective." *Journal of Politics* 70 (2): 323–34.
- Kittilson, Miki Caul. 2011. "Women, Parties and Platforms in Post-Industrial Democracies." *Party Politics* 17 (1): 66–90.
- King, Gary, Michael Tomz, and Jason Wittenberg. 2000. "Making the Most of Statistical Analyses: Improving Interpretation and Presentation." *American Journal of Political Science* 44 (2): 347–61.
- Krook, Mona Lena. 2009. *Quotas for Women in Politics: Gender and Candidate Selection Reform Worldwide*. Oxford: Oxford University Press.
- Kunovich, Sheri, and Pamela Paxton. 2005. "Pathways to Power: The Role of Political Parties in Women's National Political Representation." *American Journal of Sociology* 111 (2): 505–52.
- Laver, Michael, and W. Ben Hunt. 1992. *Policy and Party Competition*. New York: Routledge.
- Lieberman, Evan S. 2005. "Nested Analysis as a Mixed-Member Strategy for Comparative Research." *American Political Science Review* 99 (3): 435–52.
- Lovenduski, Joni, and Pippa Norris. 1993. *Gender and Party Politics*. London: Sage.
- Luhiste, Maarja. 2015. "Party Gatekeepers' Support for Viable Female Candidacy in PR-List Systems." *Politics & Gender* 11 (1): 89–116.
- Mayer, Nonna. 2013. "From Jean-Marie to Marine Le Pen: Electoral Change on the Far Right." *Parliamentary Affairs* 66 (1): 160–78.

- Mayer, Nonna. 2015. "The Closing Gap of the Radical Right Gender Gap in France?" *French Politics* 13 (4): 391–414.
- Mazzoleni, Oscar. 2012. "Between Centralization and Nationalization: The Case of the Swiss People's Party." In *Challenges for Alpine Parties: Strategies of Political Parties for Identity and Territory in the Alpine Regions*, eds. Günther Pallaver and Claudius Wagemann, 17–33. Innsbruck: Studienverlag.
- Meguid, Bonnie M. 2005. "Competition between Unequals: The Role of Mainstream Party Strategy in Niche Party Success." *American Political Science Review* 99 (3): 347–59.
- Meguid, Bonnie M. 2008. *Party Competition between Unequals*. New York: Cambridge University Press.
- Mudde, Cas. 2007. *Populist Radical Right Parties in Europe*. Cambridge: Cambridge University Press.
- Mudde, Cas, and Cristóbal Rovira Kaltwasser. 2015. "Vox Populi or Vox Masculini? Populism and Gender in Northern Europe and South America." *Patterns of Prejudice* 49 (1–2): 16–36.
- Murray, Rainbow. 2004. "Why Didn't Parity Work? A Closer Examination of the 2002 Election Results." *French Politics* 2 (3): 347–362.
- Murray, Rainbow, Mona Lena Krook, and Katherine A. R. Opello. 2012. "Why Are Gender Quotas Adopted? Party Pragmatism and Parity in France." *Political Research Quarterly* 65 (3): 529–43.
- Norris, Pippa. 2000. "Women's Representation and Electoral Systems." In *The International Encyclopedia of Elections*, ed. Richard Rose, 348–51. Washington, DC: CQ Press.
- O'Brien, Diana. 2015. "Rising to the Top: Gender, Political Performance, and Party Leadership in Parliamentary Democracies." *American Journal of Political Science* 59 (4): 1022–39.
- O'Brien, Diana. 2018. "'Righting' Conventional Wisdom: Women and Right Parties in Established Democracies." *Politics & Gender* 14 (1): 27–55.
- O'Brien, Diana, and Johanna Rickne. 2016. "Gender Quotas and Women's Political Leadership." *American Political Science Review* 110 (1): 112–26.
- Paxton, Pamela. 1997. "Women in National Legislatures." *Social Science Research* 26 (4): 442–64.
- Paxton, Pamela, and Melanie M. Hughes. 2015. "The Increasing Effectiveness of National Gender Quotas, 1990–2010." *Legislative Studies Quarterly* 40 (3): 331–62.
- Penny, Jeffrey, Erin Tolle, and Elizabeth Goodyear-Grant. 2016. "Race and Gender Affinities in Voting: Experimental Evidence." Queen's Economics Department Working Paper 1370.
- Pitkin, Hannah F. 1967. *The Concept of Representation*. Berkeley: University of California Press.
- Plutzer, Eric, and John E Zipp. 1996. "Identity Politics, Partisanship and Voting for Women Candidates." *Public Opinion Quarterly* 60 (1): 30–57.
- Rovny, Jan. 2013. "Where do Radical Right Parties Stand? Position Blurring and Dimensional Competition." *European Political Science Review* 15 (1): 1–26.
- Saha, Sparsha, and Ana Catalano Weeks. 2020. "Ambitious Women: Gender and Voter Perceptions of Candidate Ambition." *Political Behavior*. <https://doi.org/10.1007/s11109-020-09636-z>.
- Schwarz, Susanne, and Alexander Coppock. 2021. "What Have We Learned about Gender from Candidate Choice Experiments? A Meta-Analysis of 67 Factorial Survey Experiments." *Journal of Politics*. Early View. DOI: 10.1086/716290.
- Seawright, Jason, and John Gerring. 2008. "Case Selection Techniques in Case Study Research: A Menu of Qualitative and Quantitative Options." *Political Research Quarterly* 61 (2): 294–308.
- Sobolewska, Maria. 2013. "Party Strategies and the Descriptive Representation of Ethnic Minorities: The 2010 British General Election." *West European Politics* 36 (3): 615–33.
- Spierings, Niels. 2021. "Homoneationalism and Voting for the Populist Radical Right: Addressing Unanswered Questions by Zooming in on the Dutch Case." *International Journal of Public Opinion Research* 33 (1–2): 171–82.
- Spierings, Niels, and Andrej Zaslove. 2015. "Gendering the Vote for Populist Radical Right Parties." *Patterns of Prejudice* 49 (1–2): 135–62.
- Tate, Katherine. 2003. *Black Faces in the Mirror: African Americans and Their Representatives in the U.S. Congress*. Princeton, NJ: Princeton University Press.
- Tavits, Margit. 2010. "Effect of Local Ties on Electoral Success and Parliamentary Behaviour: The Case of Estonia." *Party Politics* 16 (2): 215–35.
- Teel, Dawn Langan. 2018. *Forging the Franchise: The Political Origins of the Women's Vote*. Princeton, NJ: Princeton University Press.
- Tremblay, Manon. 1998. "Do Female MPs Substantively Represent Women? A Study of Legislative Behaviour in Canada's 35th Parliament." *Canadian Journal of Political Science/Revue Canadienne de Science Politique* 31 (3): 435–65.
- Tremblay, Manon, and Réjean Pelletier. 2001. "More Women Constituency Party Presidents: A Strategy for Increasing the Number of Women Candidates in Canada?" *Party Politics* 7 (2): 157–90.
- Tripp, Aili Mari, and Alice Kang. 2008. "The Global Impact of Quotas: On the Fast Track to Increased Female Legislative Representation." *Comparative Political Studies* 41 (3): 338–61.
- Valdini, Melody. 2012. "A Deterrent to Diversity: The Conditional Effect of Electoral Rules on the Nomination on Women Candidates." *Electoral Studies* 31 (4): 740–49.
- Valdini, Melody. 2019. *The Inclusion Calculation*. Oxford: Oxford University Press.
- Volkens, Andrea, Werner Krause, Pola Lehmann, Theres Matthieß, Nicolas Merz, Sven Regel, and Bernhard Weßels. 2019. The Manifesto Data Collection [computer file]. *Manifesto Project. Version 2019a*. Berlin: Wissenschaftszentrum Berlin für Sozialforschung.
- Wagner, Markus, and Thomas Meyer. 2017. "The Radical Right as Niche Parties? The Ideological Landscape of Party Systems in Western Europe, 1980–2014." *Political Studies* 65 (1): 84–107.
- Weeks, Ana Catalano. 2018. "Why Are Gender Quota Laws Adopted by Men? The Role of Inter- and Intraparty Competition." *Comparative Political Studies* 51 (14): 1935–73.
- Weeks, Ana Catalano. Forthcoming. *Making Gender Salient: From Gender Quota Laws to Policy*. Cambridge: Cambridge University Press.
- Weeks, Ana Catalano, Bonnie M. Meguid, Miki Caul Kittilson, and Hilde Coffé. 2022. "Replication Data for: When Do Männerparteien Elect Women? Radical Right Populist Parties and Strategic Descriptive Representation." Harvard Dataverse. Dataset. <https://doi.org/10.7910/DVN/SG55BJ>.
- "What do You Guys Have? The SVP Has Always Been against Women." 2015. Vice. October 13. <https://www.vice.com/de/article/dpee3w/was-habt-ihr-nur-die-svp-war-schon-immer-gegen-frauen-49>.
- Wiliarty, Sarah. 2010. *The CDU and the Politics of Gender in Germany*. New York: Cambridge University Press.
- Xydiyas, Christina V. 2007. "Inviting More Women to the Party: Gender Quotas and Women's Substantive Representation in Germany." *International Journal of Sociology* 37 (4): 52–66.